



PEDDLER FREIGHT

Divison 1 - MCR -NMRA

Akron - Canton - Youngstown Division

Serving Carroll, Columbiana, Harrison, Mahoning, Portage, Stark,
Summit, Trumbull, Tuscarawas and Wayne Counties

www.div1-mcr-nmra.org

Volume 24 - Issue 6

March 2017

Superintendent's Bulletin



At our February event hosted by the Youngstown Model Railroad Association we heard how their group has existed for 60 years and been in their present location for 40 years. To be around for that long takes hard work and dedication as well as being in the right place at the right time. And this was a group effort. The layout is well done and operates very well.

Our Division has been through a similar process. And sometimes you just have to take a chance on trying something new or changing a former way of doing things. We found that we could help host a national convention. That experience I believe will help us as we host a great MCR convention in 2019.

We've had great participation in the model contest and the Contest Committee has promised new contest themes for 2017-2018. The idea of a diorama should prove to be fun and interesting. If you don't want to tackle a diorama by yourself why not ask for help. This is also a good way to improve your skills. Attend our monthly events where you can network with fellow model railroaders and enjoy a clinic or two to help improve your skills. Remember, nothing ventured nothing gained. You will always learn something at each event and clinic. If you have something you need help with please ask. Every member of Division 1 has something to contribute to help make the hobby enjoyable.

If you have a layout please consider opening it up during a layout tour. The layout doesn't have to be finished and others would enjoy seeing how it was built. And bring something for "Bring N Brag." It can be a model you put together, an article you read, a product you purchased or a helpful hint.

I would like the membership to think on how we can help with the educational component of our Division. Our module groups are a key component to visually show others what the hobby of model railroading is all about. We are also available to give talks to groups or organizations about model railroading. And our web site will become a key to getting the word out about Model Railroading. To keep this hobby going it takes people. I personally thank each and every one of you for being in the hobby and hope to see you at the monthly event, convention or train show. Division 1 layout tours are April 1st. Please visit them and enjoy.

Our March event will be held on Saturday, March 18 at Portland Locomotive Works at the end of the Midwest Narrow Gauge Show. Please email me or call me if you plan to attend so you will not have to pay to get into the facility. Better yet, come when the doors open at 9 AM, pay a one day admission fee of \$12.00 and enjoy the clinics and vendors.

All Aboard!!

Jim DiPaola, Superintendent
NMRA, MCR, Division 1

Clinic Report

Larry Madson has elected to postpone his clinic on DC to DCC because of the need to limit our meeting to one hour during the Midwest Narrow Gauge Show.

We do, however, have a special guest speaker arranged by Gary Kohler and this is Peter Magoun, MMR (<http://www.nmra.org/peter-magoun-mmrr>). Peter is with the the Great Lakes HOn30 Module Group, which you will see at the show. He will sit in on our meeting and answer questions from us about the "National." He'll outline how the "National" is active and moving forward, and point out that those on the National Board and the Department Heads are real people, and not "The Anointed Ones."

Steve Zapytowski, Asst. Superintendent
NMRA, MCR, Division 1

2016 - 2017 Division 1 Meetings

March 18 - Midwest Narrow Gauge Show, Salem
Please note date change, Saturday, March 18
April 23 - Sebring Model Railroad Club, Sebring
May 21 - Mike Bradley, Rootstown
June 18 - Larry Brown, Ravenna

Tales of a Shay: From Wreck to Reincarnation

Part 16: More Boiler Detail

Steve Zapytowski

Recently, I had the opportunity to print one of my parts for this project on a newer 3D printer than I used the last time. There was a marked difference between the two printings (See Tales of a Shay, Part 14) and the newer part is the one

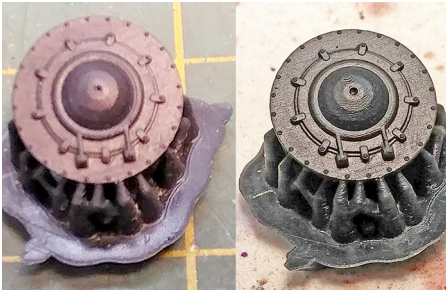


Figure 184: On the left is the smokebox front printed by Formlab's Form 1+ printer. The Original printing was done at a low resolution setting. The part on the right is from Formlab's new Form 2 machine and was printed using the high resolution setting.

ultimately used in the model. (Figure 184) The print time for the part on the right was around 2 hours. When cutting a 3D printed part from its support sprues remember to use a cutting disk on a Dremel tool and not a sprue nipper or rail cutter. The compression created by the shearing forces of such tools can shatter the part. After the part is separated from its base then a nippers and cutters can be used safely. It then took a few minutes with a file to make the smokebox front fit into the model.

After fitting the smokebox front into the smokebox I drilled out the hole in the center to accommodate the stem on the back of the number plate. (Figure 185) Next, I ran 0.020" brass rods for hand rails through the previously drilled holes in the cab front. These were fed through the stanchions previously mounted on the boiler and were bent in place to follow the proper path. They were soldered only at the inside of the cab and then trimmed to length. Operating cords were then added for the bell and whistle, which were then run back through the cab front. These were made of single strands of copper wire pulled from a short length of zip wire. A number 79 drill bit was used to make the holes in the cab front. The same bit was used to drill a hole through the bell's handle, through which the copper strand was run before soldering. The whistle lever did not permit drilling so the strand was simply soldered to it. (Figure 186) As these are fragile they are best installed near the end of the process when further handling of the model will be at a minimum.

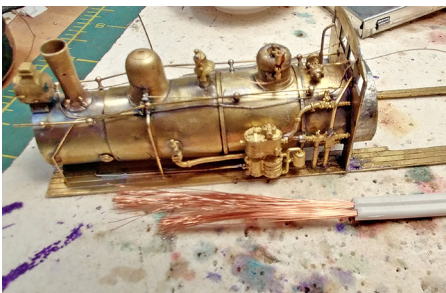


Figure 186: The handrails are shown in place and bent to follow the shape of the boiler. The copper strand attached to the bell can best be seen at the rear of the cab front in this photo. Once soldered in place both ends of the strand were trimmed.

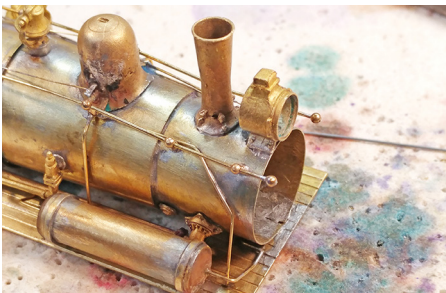


Figure 188: The finished parts were soldered to the ends of the handrails, thus capping them in the same way as those seen on Cass Scenic Railroad's Shay #5.

Cass Scenic Railroad's Shay #5 has a brass ball capping the forward ends of its handrails and I elected to do the same on my model. To make these I ran a pair of stanchions onto a piece of 0.020" music wire in to help control the parts while working on them. Then I

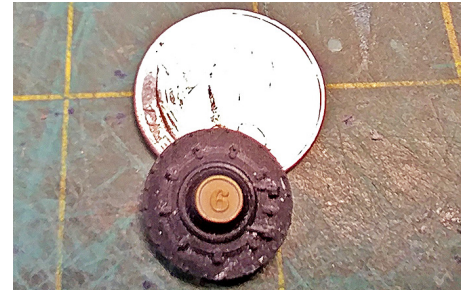


Figure 185: The #6 number plate (Precision Scale Company HO-31348) was glued into the smokebox front using a clear epoxy. More on this glue later...

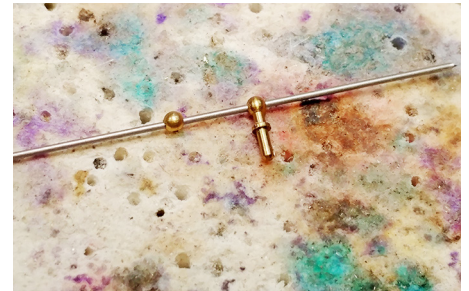


Figure 187: Here the stanchions (Cary #13-1180) are shown on a piece of 0.020" music wire. The stem on the left piece was removed using rail nippers.

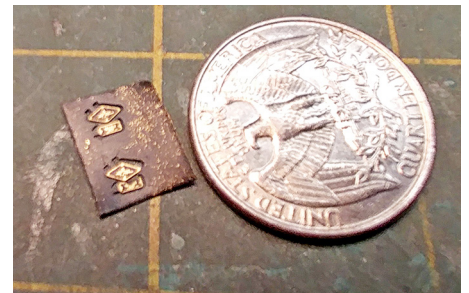


Figure 189: These are the builder's plates for my Shay #6. (Precision Scale Company #HO-31138) Though they are made from brass, soldering them to the smokebox seemed like a bad idea.

used rail nippers to remove the stems and then a jeweler's file to smooth out the remaining parts. (Figures 187 and 188)



Figure 190: This is one of the few times that I did not use Dykem for marking brass. As I could not adhere the parts without removing the coloring it made no sense to use it. Instead I relied upon two very light scribe marks made in the brass.



Figure 192: A tiny drop of epoxy was placed on the smoke box in the center of each builder's plate location. Each plate was allowed to fully cure before the next was applied.

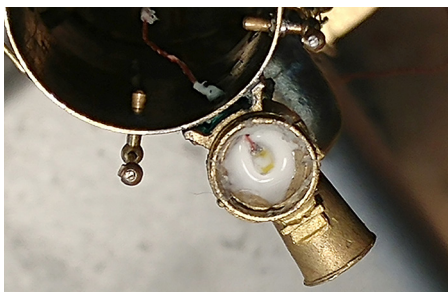


Figure 194: Here the LED is sitting in a drop of Canopy Glue inside the headlight. The glue was allowed to cure overnight. It dried clear and also acts as an insulator between the back of the LED and the brass of the headlight.

Shays were manufactured by the Lima Locomotive Works in Lima, Ohio and had their builder's plates mounted on the smoke box. (Figure 189) In preparation for attaching my builder's plates I cleaned the smokebox with alcohol swabs to ensure any and all residue was stripped from the brass. I then marked the center of the diamond shaped plate using dividers. (Figure 190)

After considerable research I settled upon a two part clear epoxy with a five minute working time for attaching the builder's plates. The epoxy I used was PC Products 70147-2 PC-Clear Epoxy which comes in double syringe. (Figure 191) An extremely small amount of epoxy was used for each plate, just enough to cover the end of a piece of 0.020" music wire. This was dabbed into the center location of each plate and the plate was then laid over that drop using a fine pair of tweezers. The plates were then adjusted into their final position using a needle point awl. (Figure 192)

At this point I added an LED inside the headlight. I used a GW0603-DL06 Golden White surface mount LED from Richmond Controls. Taking a small scrap of printed circuit board (PC Board) I cut two gaps in the copper surface using a cutting disk on my Dremel tool. Then I soldered a 3.3 K Ohm, 1/10 watt resistor across the two ends of the PC board. (Figure 193) The LED was glued inside the headlight using Pacer's Formula 560 Canopy Glue after its leads were run through the hole previously drilled through the bottom of the headlight. (Figure 194)

The LED leads are a very fine lacquer coated #36 wire and to remove lacquer insulation I recommend touching a dry soldering iron to the lead ends. You can actually see the wire become shiny as the lacquer burns off. The longer of the two leads is the positive wire on Richmond's LEDs. Before getting too carried

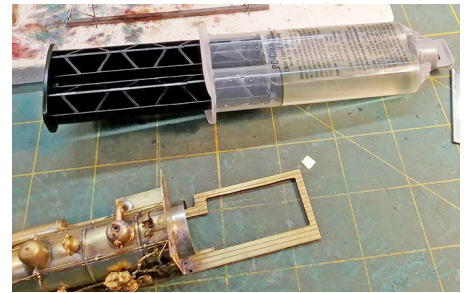


Figure 191: The double syringe of epoxy is shown here. My first experiments with the product were less successful until I scrubbed the parts with denatured alcohol. Even though I originally thought they were clean there was enough oil residue on them to prevent a good bond.

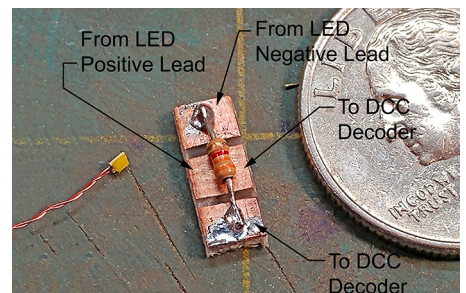


Figure 193: On the left is a Richmond Controls GW0603-DL06 golden white surface mount LED. Generously, Richmond Controls will solder the leads to their LEDs for you. The small bit of printed circuit board will be epoxied inside the boiler near the backhead as part of the LED installation.

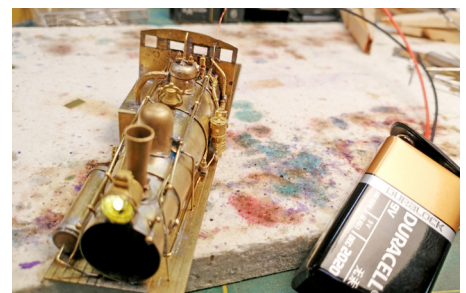


Figure 195: It worked! Just to be safe I also tested it with the decoder soldered in place and used alligator clips to attach the decoder's leads to my track. It still worked.

away with the LED installation I decided it would be best to test my scheme. I temporarily soldered the leads from a 9 volt battery clip to the PC board and then snapped in a 9 volt battery. (Figure 195) The boiler will eventually need to be weighted to help provide traction for the Shay's front drive wheels and this installation could scrape against the LED lead wires. As the insulation on the LED leads is very fragile I elected to run the leads through a piece of shrink tube for protection. This tube was then glued to the top inside of the boiler. (Figure 196)

With the addition of one final part I believe the boiler detailing is actually finished. I put a tool box on the left deck near the builder's plates. (Figure 197) I planned to include the cab sides in this installment, but had three separate starts with brass sides go badly for me so the cab sides will be completed in the next installment. There I will make hybrid parts using both brass and laser cut parts. The current state of Shay #6 is seen in Figure 198. **To be continued...**

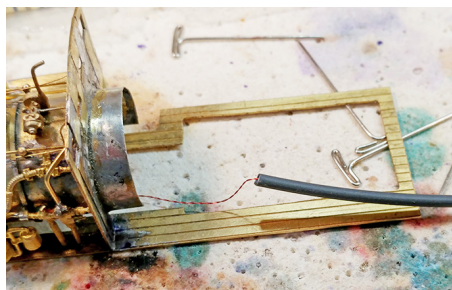


Figure 196: I used a piece of small diameter shrink tube to protect the lacquer insulation on the LED leads. The tube was not heated to shrink it. Later I attached it to the top inside of the boiler with CA glue.

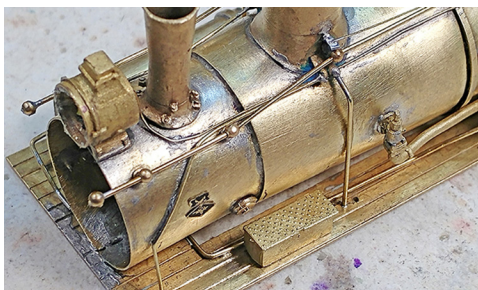


Figure 197: The tool box is from Precision Scale Company, part #31594.

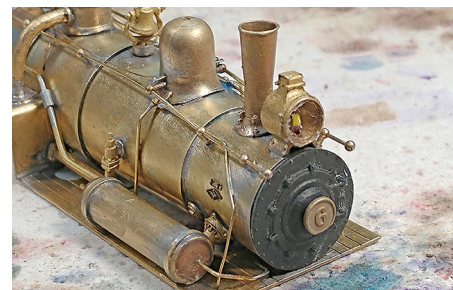


Figure 198: The present state of the new Shay #6.

Membership Report - March 2017

101 members

PEDDLER FREIGHT SUBSCRIPTION FORM

Division 1 has moved to email publishing of the Peddler Freight. There is no cost for the email Peddler Freight. However, if you want to receive the Peddler Freight by regular mail, Division 1 requests that you subscribe in order to support the cost of printing and mailing. Under current rules, you will NOT be denied a copy of the Peddler Freight if you do not subscribe, but your support for Division 1 would be appreciated.

SUBSCRIPTION COST: \$20 for the publishing year September, 2016 through June, 2017.

Make checks payable to: Division 1 - MCR - NMRA

Mail to: Bruce Hukill, editor
223 Pierce Ave.
Cuyahoga Falls, OH 44221

Name _____

Address _____

PIKE AD: \$5

City _____ Zip _____

EMAIL SUBSCRIPTION (Free)

Email _____

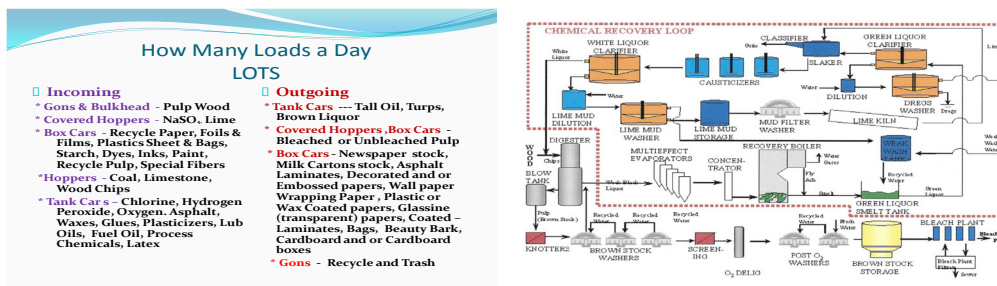
Subscription preference: Mail _____ Email _____

N SCALE NEWS

Broadway Limited M1a and M1bs have been cited for being delivered with dead shorts, making them inoperable. Broadway does the repair under warranty, but it takes at least 3 weeks and you pay the return postage to Florida unless returned by dealer.

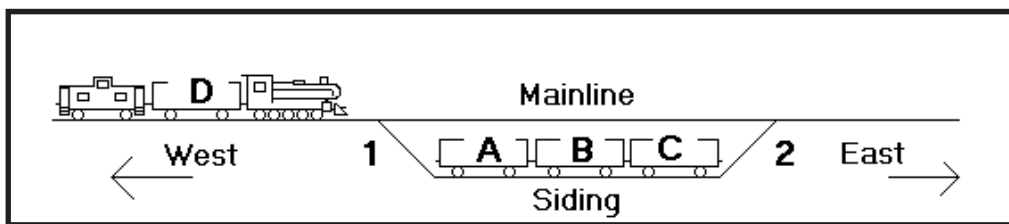
Why Not a Pulp and Paper, Part 8 – This month we will discuss the smelt tank and chemical recovery. Molten smelt from the bottom of the recovery boiler falls into a tank of hot water and is dissolved, the smelt shatters explosively (not unlike dropping molten lead into water which is not advisable). Note the employee who is responsible for keeping the smelt taps flowing is one of the highest paid guys in the mill. Resulting green liquor is pumped into a set of clarifiers. After the clarification, green liquor is sent to a slaker where it mixes with lime and then moves into causticizers. Chemical conversion creates white liquor (a solution of NaS and NaOH) which is used to pulp wood. Lime mud is washed and then returned to the lime kiln which is then recycled to causticize another set of green liquor. The chemical recovery is 97% and a 3% make-up of Limestone and fresh and Sodium Sulfate are needed in this area.

Loads at a highly integrated pulp and paper mill are also shown this month.



Ramblings – Well it time to go out to the garage and start getting ready for the Midwest Narrow Gauge show. There is lots of maintenance to be done and maybe a new module.

Weak and Worn Switching Puzzle (as submitted by Ray Lora last month)



Our chore today as the crew of this small train is to exchange cars D and B and continue the train eastward. The tough part is that our locomotive is so old and worn and weak that it can only move one car at a time! The siding length is restricted to just 3 car lengths. You can pretty much disregard the caboose as it is lightweight and does not enter the problem. Our conductor is staying in the caboose cooking lunch; he said we should be able to do this without him. What is the least number of moves in which the chore can be accomplished so the entire crew can enjoy lunch in the caboose?

_____ Were you able to complete the puzzle in less than 25 moves?

Solution: After cutting off the caboose and car D, throw switch 1 to the siding and get car A and pull it out clearing switch 1, then push it forward on the mainline to a point 3 car lengths east of switch 2.

Return the engine alone past switch 1 and get car B from the siding. Pull it through switch 1 and advance it over the main against car A.

Next back into the siding at switch 2 and get car C. Pull it onto the main and back it into the clear on the main just west of switch 2. Cut off and pull ahead past switch 2 and pick up car B. Drag it back through the siding and onto the main again at switch 1 moving forward to drop it just east of this switch on the main.

Then back into car D hauling it to the center of the siding. Cut off and proceed through switch 2. Back down the main and get car C, return to switch 2 and shove car C against car D where it belongs.

Pull ahead over the switch, back up the main to car B and place it 2 car lengths west of switch 1. Cut off; pull ahead on the main to car A, and back over switch 1 and couple it onto the back of car D.

Now you are ready to back out through switch 1 again and on down the main to pick up car B and you are good to go. Don't forget the caboose and conductor, the soup is ready.



Saturday, April 1



Welcome to our annual Division 1 Layout Tour. I want to thank all layout owners for graciously opening their doors to host. We have five layouts open this year, all from ten to five. No two layouts are alike. See something you like? Mention it! Have a question? Ask! In other words, let 's also be gracious guests. Please ask before taking pictures. Finally, respect the time by not arriving early or staying late.

For the GPS
Up North
Jim Peters - 735 Southridge Rd. Northfield 44067
*New - Mike Farrow—5621 Allyn Rd., Hiram 44255

East of Route 8

Jim DiPaola—3201 Summit Rd. Ravenna 44266
Mike Bradley - 3859 Sandford Rd., Rootstown 44272
Steve Zapytowski - 1059 Cottage Gate Dr., Kent

James (Jim) Peters
Layout Tour Chair
(216) 402-8507 (voice/text)
jpeters711@yahoo.com

iPad 10:50 AM 62%

mapcustomizer.com

MapCustomizer New map My Maps About Print Share Login Signup

1	Jim Peters	735 Southridge Rd, Northfield, OH 44067, Stati Uniti
2	Mike Farrow	5621 Allyn Rd, Hiram, OH 44234, Stati Uniti
3	Steve Zapytowski	1059 Cottage Gate Dr, Kent, OH 44240, Stati Uniti
4	Jim DiPaola	3201 Summit St, Ravenna, OH 44266, Stati Uniti
5	Mike Bradley	3859 Sanford Rd, Rootstown, OH 44272, Stati Uniti

Division 1 Layout Tour Spring 2017

Number	Name	Location
1	James Peters	735 Southridge Rd. Sagamore Hills
2	Mike Farrow	5621 Allyn Rd Hiram
3	Steve Zapytowski	1059 Cottage Gate Dr. Kent
4	Jim DiPaola	3201 Summit Rd. Ravenna
5	Mike Bradley	3859 Sandford Rd. Rootstown

DIVISION 1 CONTEST - Flea Market Find - February Category



**1st Place - Kit-Bashed
Lloyd Horst**



**2nd Place - Kit-Bashed
Mike Bradley**



**3rd Place - Kit-Bashed
Mike Bradley**

STANDINGS 2016-2017

STANDARD KIT

Mike Bradley - 11 pts
David Hazlett - 6 pts
Bob Ashley, Jr. - 1 pt
Ray Lora - 1 pt
Bob Ashley, Sr. - 1 pt

KIT - BASHED

Mike Bradley - 17 pts
Frank Williamson - 4 pts
Lloyd Horst - 4pts
Ray Lora - 3 pts
Josh Cohen - 2 pts
David Hazlett - 1 pts

CRAFTSMAN KIT

Matt Woods - 5 pts
Don Avila - 4 pts
Dave Hazlett - 1 pt

SCRATCH BUILT

Matt Woods - 7 pts
Frank Williamson - 2 pts
Jim Peters - 2 pts
Ray Lora - 1 pt

CONTEST TOPICS FOR 2016-2017

MARCH - Large (45+ feet) Billboard Covered Hopper Car (combined with April contest, bring both March and April entries to the April meeting)

APRIL - Servicing facilities - Steam or Diesel

MAY - Passenger or Business Car

Divison 1 Diorama Contest coming in April 2018

Two Categories (Double points awarded)

1. Scratch Built/Craftsman Kit - Everything, including track, to be built by the modeler
2. Standard Kit/Kit-Bashed - Can be a combination of kit-bashed, built, or prebuilt items

All dioramas will have the following:

- Scenery
- Ballasted track
- Constructed on a solid base of wood or foam or other solid material
- Have at least one piece of rolling stock on track
- Track long enough to hold at least one piece of rolling stock
- At least one building or structure
- Size limited to 2 square feet

SEE DIVISION CONTEST GUIDELINES FOR DEFINITION OF CATEGORIES

We wanted to announce this early to allow all to have plenty of time to complete their entry!

Lloyd Horst

Matt Woods

Contest Chairs

Division 1, MCR, NMRA Minutes
February 19, 2017
Youngstown Model Railroad Association, Youngstown, Ohio

- I. **Welcome:** The business meeting was called to order at 2:00 pm. Superintendent Jim DiPaola thanked Jim Pope, the President of the Youngstown Association for hosting this month's meeting. Mr. Pope stated that this was the 60th anniversary of the Youngstown Model Railroad Association and that they had been in the same building for 40 years. The club provided pizza and drinks.
- II. **Minutes:** A motion was made and seconded to approve the January 2017 minutes as printed in the February 2017 Peddler Freight. Don Bonk pointed out an error in that the May meeting date was moved up not because of the National N-Scale Convention but because of the MCR Regional Convention in Louisville. The amended minutes were approved.
- III. **Treasurer's Report:** Report given by Treasurer Mike Bradley. Balances in the CD and checking account, income and expenses were presented to the membership. A motion was made and seconded to accept the February 2017 Treasurer's report subject to audit. The motion passed.
- IV. **Membership:** No report since Larry Brown was absent.
- V. **Committee Reports:**
- A. **Clinics** – Steve Zapytowski will present the clinic this week on the turnout hardware that he has used on his layout.
 - B. **AP** – Members encouraged to work on their Golden Spike and AP certificates.
 - C. **Peddler Freight** – Bruce Hukill passed out a Peddler Freight deadline schedule for the remainder of the year.
 - D. **Scale Update** – No report.
 - E. **Modules** – Bob Ashley Sr. reported on setting up the modules at the Midwest Narrow Gauge Show in Salem in March. In April, we will repeat the Youngstown Club train show in Salem.
 - F. **Web Site** – Our website is up and running. <http://www.div1-mcr-nmra.org/>. Steve Zapytowski is managing the web page. If you want photos of your layout added to the web site please see Steve.
 - G. **Apparel** – See Jim Williams if you have any questions or need to order.
 - H. **Upcoming Events** –
 - A. Midwest Narrow Gauge Train Show: volunteers are needed for 2 hours or more to watch doors, etc. and will get in free; a two day pass will cost \$20; a one day pass is \$12; Bob Ashley, Jr. pointed out that volunteering for this show will be important in that it will, in the future take the place of our flea market and we will reap part of the proceeds based on our participation; people helping with the modules will be considered as volunteers; there will be an on-site food service; Steve Zapytowski will present two clinics and Matt Wood will also have a clinic; Mike Bradley and Steve Zapytowski will each provide ten junior memberships to be given to young people interested in the hobby; our March meeting will be held at 2 pm on Saturday at the show in a side room and members attending will not be charged the show admission rate to just attend the meeting; Bruce Hukill will send out an e-mail to find out who is planning on attending just the meeting.
 - B. MC Regional Convention is in Louisville, KY, May 18-21
 - C. NMRA National Convention is in Orlando, FL, July 30 – August 6
 - D. Steel Mill Modelers SIG is in Bethlehem, PA, August 13-16

Division 1 Events:

March 18 (Saturday), 2017 – Greenford Space Center at the Midwest Narrow Gauge Show
April 23, 2017 – Jim DiPaola, Ravenna, OH
May 14, 2017 – Mike Bradley, Rootstown, OH
June 18, 2017 – Larry Brown, Ravenna, OH

Bring-N-Brag:

Bob Ashley, Sr. presented Lloyd Horst and Glenn Yoder plaques and pictures for having their modules in the National Convention in Indianapolis last year.
Dave Fulkes presented his HO detail products from his "Leavin' A Mark Engraving" company.

Old Business:

MCR 2019 Convention: Jim DiPaola reported that he and Steve Zapytowski have settled on hosting the convention at the Holiday Inn in Boardman. The rate of \$119/night is half of what the Sheraton Suites in Cuyahoga Falls would charge and is guaranteed for May 2-4 of 2019. They also were very cooperative and wanted our business.

New Business:

Lloyd Horst reported that he and Matt Wood would present a list of the contests for next year at the March meeting. However, the contest for April, 2018 will be a diorama and he passed out a requirement sheet so people could consider what to do and start construction.

Twenty-two (22) people attended the meeting.

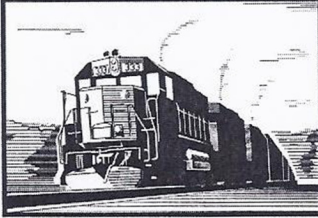
The 50/50 raffle was held.

A motion was made and seconded to adjourn the meeting. The motion passed. The business meeting adjourned at 3:00 pm.

Respectively submitted,
Jim Williams, Clerk

7th Year

5th Year



ROB'S TRAINS

333 East Main St.
Alliance, Ohio 44601
(330) 823-7222

Tues., Thur., Fri. Noon - 8 p.m.
Sat. 10 a.m. - 3 p.m.

e-mail: robstrains@roadrunner.com
Web site: www.robstrains.com

Carol Ann Bonk, ABR, GRI
REALTOR®

Cell: 330-936-9752

Fax: 330-875-1179

CarolAnnBonk@kw.com

KELLER WILLIAMS®
LEGACY GROUP REALTY

4580 Stephen Circle, N.W., Suite 100, Canton, OH 44718



Need a train room?
Call me! (330) 936-9752

4th Year

3rd Year



MICHAEL L. BRADLEY
LUTCF, CISR



BRADLEY INSURANCE
AGENCY

851 W. Main St.
Ravenna, OH 44266

Phone: (330) 296-7622
Fax: (330) 296-7672

www.mbradley.com

MAIL POUCH TOBACCO

Background Quality
Printed Paper Barn
Kits N•HO•O Scale

Ray Lora 1869 Whinnery Rd Salem Ohio 44460

ray85lora@gmail.com

330-332-5035

THANK YOU ALL FOR YOUR SUPPORT

216.402.8507

LS & MJ Railroad

Little Scioto & Mingo Junction

Jim Peters
Interested in operation send email:
jpeters711@yahoo.com

THE
*Yardley
AND
Hilton*
HO Scale Room Size
RAILROAD



RAY LORA

1869 WHINNERY RD
SALEM OHIO 44460

330-332-5035

RAY85LORA@GMAIL.COM

BONK - RR
Bankers of Ohio
and Northern
Kentucky Railroad



N-Scale
VISITOR'S PASS

Donald and Carol Ann Bonk
Louisville, Ohio 44641

7345 Hahn Street
330-875-4567

THE
**TILLAMOOK
& ASTORIA**
RAILROAD COMPANY



Western Oregon Circa 1900 to 1910 — HO and HO N3

Steve Zapytowski, President
1059 Cottage Gate Drive
Kent, OH 44240
330-678-4583
szapytowski@ne.rr.com



THIS MONTH'S MEETING
Saturday, March 18, 2017
Host - Midwest Narrow Gauge Show
NMRA - MCR Division 1 Spring Railfest
Greenford Space Center
7600 W. South Range Rd., Salem, OH 44460
2 PM

The Greenford Space Center is located on OH-165 (W. South Range Rd.) , just west of Route 99 (Lisbon Rd.) The building is an old school. Ohio 165 can be accessed from Route 11 to the east or Route 14 to the west

Food will be available for sale from event vendor.
There is NO sale table or contest.

Train Shows and Open Houses

Midwest Narrow Gauge Show - March 16-18

NMRA - MCR Division 1 Spring Railfest

Greenford Space Center
7600 W. South Range Rd., Salem, OH 44460
See flyer on page 9
Full flyer on website: www.div1-mcr-nmra.org

Div. 5 Railfest - Model Railroad Show - March 18-19

Lakeland Community College
7700 Clocktower Dr., Kirtland, Ohio 44094
Admission is \$7.00 10 AM - 4 PM

Massillon Train & Toy Show - March 26

K of C Hall, 988 Cherry Rd. NW, Massillon, Ohio 44647
Admission is \$5.00 10 AM - 3 PM

Second Annual Division 1 Layout Tour - April 1

See pages 6-7 10 AM - 5 PM

Medina Train and Toy Show - April 2

Medina Fairgrounds, Medina, Ohio 44256
Admission \$6.00 9 AM - 3 PM

Fundraiser - Painesville Railroad Museum (aka Painesville Depot) - April 8

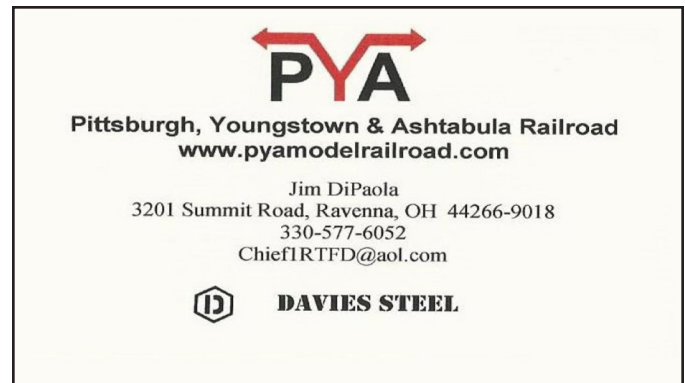
Harry Buffalo, 2119 Mentor Ave., Painesville, Ohio 44077
Admission \$20.00 each 3 - 5 PM

Youngstown Model Railroad Assn. Toy Train Flea Market - April 9

Salem Center Plex
1098 N. Ellsworth Ave., Salem, Ohio 44460
Admission \$5.00 10 AM - 3:30 PM

Spring Model and Toy Swap & Sale Lorain County Chapter of the IPMS - April 9

Westlake FOP Lodge
26145 Center Ridge Rd., Westlake, OH 44145
Admission \$3.00 9 AM - 3 PM



PEDDLER FREIGHT

223 Pierce Avenue

Cuyahoga Falls, OH 44221

Publication of Division 1 - MCR - NMRA
The Akron, Canton, Youngstown Division

First Class

Division 1 Officers

Superintendent - Jim DiPaola	330-297-5571
Asst. Supt. - Steve Zapytowski	330-715-3444
Treasurer - Mike Bradley	330-325-7622

Division 1 Appointees

Clerk - Jim DiPaola	330-297-5571
PF Editor - Bruce Hukill	330-571-4037

Division 1 Volunteer Positions

Achievement Program - Jim Peters	216-402-8507
Apparel - Jim Williams	330-966-5477
Christmas Dinner - Randy Dettmer	330-653-3537
Clinics - Jim Peters	216-402-8507
Contest - Matt Woods	330-465-8724
- Lloyd Horst	330-465-7402
Membership - Larry Brown	330-221-6067
Modules:	
HO/Chair - Bob Ashley Sr.	330-644-4778
HO/NTRAK - Jim Williams	330-966-5477
NTRAK - Don Bonk	330-418-6860
Roster - Larry Brown	330-221-6067
Webmaster - Steve Zapytowski	330-715-3444

**WHO TO CONTACT IN
DIVISION 1
AND THE NMRA**Mid-Central RegionPresident - Steve Kaplan
email: MCRPREZ@HQ.NMRA.ORGNational Model Railroad AssociationPresident - Charlie Getz
email: PRES@HQ.NMRA.ORG
Vice-President - Dave Thornton
email: VP@HQ.NMRA.ORG

The "Peddler Freight" is published each month September through November and January through June. Opinions expressed in this issue may not represent the opinions of the Editor, Division 1, MCR or NMRA. Suggested donation is \$20.00 a year. Checks payable to: Division 1 - MCR - NMRA, Inc. may be mailed to Bruce Hukill, Editor, 223 Pierce Ave, Cuyahoga Falls, OH 44221

